



## Syslog Setup using CLI or Web GUI

### Topic Covered

|   |           |
|---|-----------|
| <b>Syslog Description</b> .....               | <b>2</b>  |
| <b>Initial Preparation</b> .....              | <b>2</b>  |
| <b>Connecting to the 10RX</b> .....           | <b>4</b>  |
| <b>Configuring Syslog using the GUI</b> ..... | <b>6</b>  |
| <b>Configuring Syslog using the CLI</b> ..... | <b>10</b> |

### Featured Brands



# General Information

## 1 Syslog Configuration:

Syslog is a 10RX feature that allows the configuration of a remote server (Syslog Server) to receive 10RX events that are normally only recorded in a local file. This allows the system administrator to conserve space in the 10RX file system by reducing the requirement to keep events locally for a long period of time.

## 2 Initial Preparation

Gather the information, tools and equipment needed to complete this task. The example values given in this document are not meant to be thought of as recommended as each installation is unique and has its own requirements.

### 2.1 Tools and equipment:

#### 2.1.1 Cables

Console cable RJ45 to DB9 for systems with serial port (**Model CONSOLE-CBLQD**) or

Console cable RJ45 to USB for systems with only USB ports (**Model CONSOLE-CBLQU**)

RJ45 Ethernet cable

|   |          |                     |
|---|----------|---------------------|
| 1 | RTS      | Request to Send     |
| 2 | Not Used | No Connection       |
| 3 | TXD      | Transmit Data (out) |
| 4 | GND      | Signal ground       |
| 5 | Not Used | No Connection       |
| 6 | RXD      | Receive Data (in)   |

|   |          |               |
|---|----------|---------------|
| 7 | Not Used | No Connection |
| 8 | CTS      | Clear to Send |

**RJ45 Console port pin assignments**

**2.1.2 Software**

Terminal Server Software for a Windows PC supporting serial and SSH connections to access the 10RX CLI;

Recommended, not supplied by Belden.

Examples: TeraTerm (<http://en.osdn.jp/projects/tssh2/releases/>)

Putty (<http://www.chiark.greenend.org.uk/~sgtatham/putty/download.html>)

Internet Browsers used to access the 10RX Graphical User Interface, hereafter called the GUI.

Examples: Firefox (<https://www.mozilla.org/>)

Chrome (<https://www.google.com/chrome/>)

These are third party software and as such are not supported by Belden.

**2.1.3 Laptop or Desktop Personal Computer required**

These devices are not supplied nor supported by Belden

**2.2 Information to get before starting:**

This information may be supplied by your IT department or the network administrator for the network where the 10RX will be installed.

**2.2.1 IP address assigned to the Syslog Server**

Example Value Used: 192.168.1.1

**2.2.2 Protocol used by the Syslog Server**

Example Value Used: UDP (UDP and TCP are available)

### 2.2.3 UDP or TCP port used by the Syslog Server

Example Value Used: 514 (default for UDP; 604 is default for TCP)

### 2.2.4 Categories expected by the Syslog Server

Example:

| Priority   | Facility | Severity        | Addr-Type | IpAddress    | Port  | Type  |
|------------|----------|-----------------|-----------|--------------|-------|-------|
| -----      | -----    | -----           | -----     | -----        | ----- | ----- |
| 128(128-0) | local0   | 0-Emergencies   | ipv4      | 172.29.1.150 | 514   | udp   |
| 129(128-1) | local0   | 1-Alerts        | ipv4      | 172.29.1.150 | 514   | udp   |
| 130(128-2) | local0   | 2-Critical      | ipv4      | 172.29.1.150 | 514   | udp   |
| 131(128-3) | local0   | 3-Errors        | ipv4      | 172.29.1.150 | 514   | udp   |
| 132(128-4) | local0   | 4-Warnings      | ipv4      | 172.29.1.150 | 514   | udp   |
| 133(128-5) | local0   | 5-Notification  | ipv4      | 172.29.1.150 | 514   | udp   |
| 134(128-6) | local0   | 6-Informational | ipv4      | 172.29.1.150 | 514   | udp   |
| 135(128-7) | local0   | 7-Debugging     | ipv4      | 172.29.1.150 | 514   | udp   |

Increasing value of priority includes all lower numbered values

Priority of 130 will send all critical, alerts, and emergency events

Example Value Used: 135 (all severities of events will be sent to the Syslog Server)

## 3 Connecting to the 10RX

### 3.1 Console Port Connections

The console port of the 10RX is an RJ45 connector that can be located on either the front or rear of the system. It is always located with the LED indicators (power, activity or connectivity)

Use the appropriate cable to connect from the laptop to the console port. Start the Terminal program installed on your PC (TeraTerm in this document), select the appropriate serial port (this will vary from system to system depending on the cable and the adapter used) and configure the serial port properties as follows:

- 38400 Baud rate
- 8 Data bits
- 1 Stop bit
- No Parity
- No Flow Control

After completing this and hitting the enter key you should see a **login:** prompt. The default username and password is **manager**.

## 3.2 SSH Connections

Before connecting to the Ethernet port on the 10RX the IP address of the Laptop/PC must be set to be in the same subnet as the default IP of the 10RX, **in this example it is set to 172.29.1.5 mask 255.255.255.0.**

Only Ethernet port 1/1 is enabled when the 10RX is first powered up. This port is always the top left port set when facing the system. The 10RX Ethernet ports 1 and 2 are RJ45/SFP socket port pairs only one or the other can be used. When first setting up the system it is recommended that the fiber port not be used till all initial setup is done. The default address is 192.168.1.2.

Some Terminal Server software will take what seems a long time to make the first connection, do not despair a lot of back and forth occurs just this once and usually once all this has completed you will be asked to accept a key (not accepting this key will not allow you to login).

After this you will see a **login:** prompt. The default username and password is **manager**.

**NOTE:** Remember that once the IP address of the 10RX has been changed this initial SSH connection will no longer be valid and a new session with the new address must be started to continue.

## 3.3 Web/GUI Connections

Before connecting to the Ethernet port on the 10RX the IP address of the Laptop/PC must be set to be in the same subnet as the default IP of the 10RX, **in this example it is set to 172.29.1.5 mask 255.255.255.0.**

Only Ethernet port 1/1 is enabled when the 10RX is first powered up. This port is always the top left port set when facing the system. The 10RX Ethernet ports 1 and 2 are RJ45/SFP socket port pairs only one or the other can be used. When first setting up the system it is recommended that the fiber port not be used till all initial setup is done. The example address is 172.29.1.1 and a secure connection is required. Thus the URL/Address to access will be **https://172.29.1.100.**

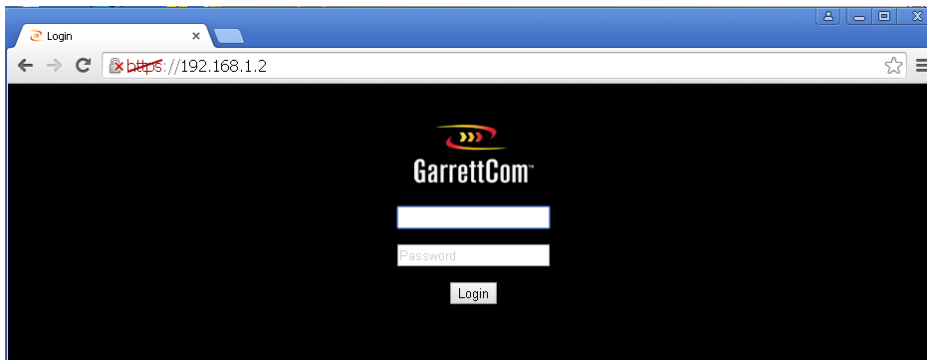
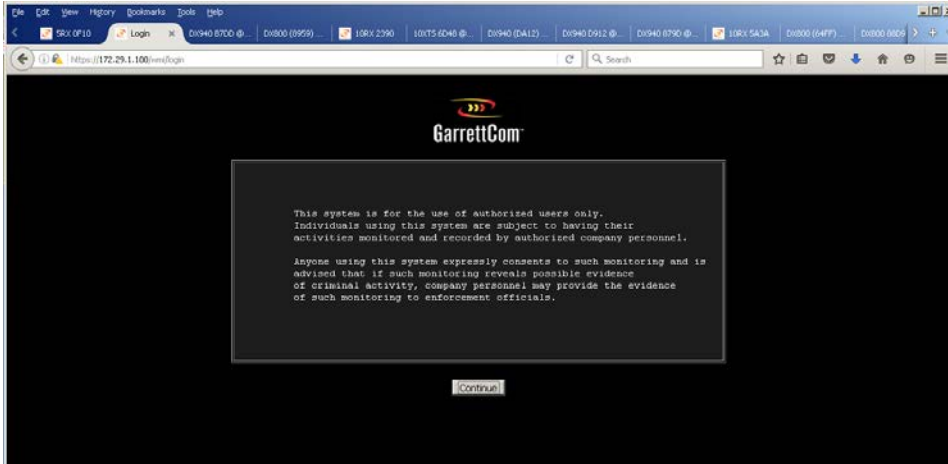
**NOTE:** All newer web browsers and all older browsers that have all of the security updates installed are configured by default to reject self-signed certificates (these certificates are used to setup the SSL secure connection). However you are offered as the user the opportunity to bypass this block and continue to the web page. You will be required to do this for the 10RX.

After this you will see a **login:** screen. The default username and password is **manager**.

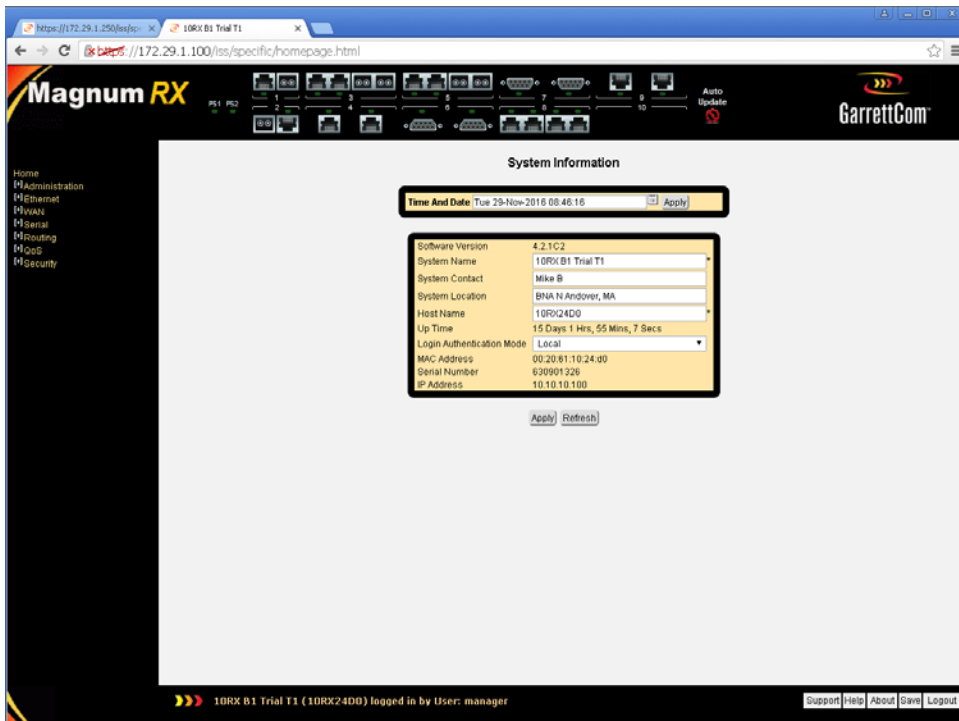
## 4 Configuring Syslog Using the GUI

### 4.1 Logging in to the 10RX using the browser

The Chrome browser was used for screen captures for this document, screens will vary from browser to browser.



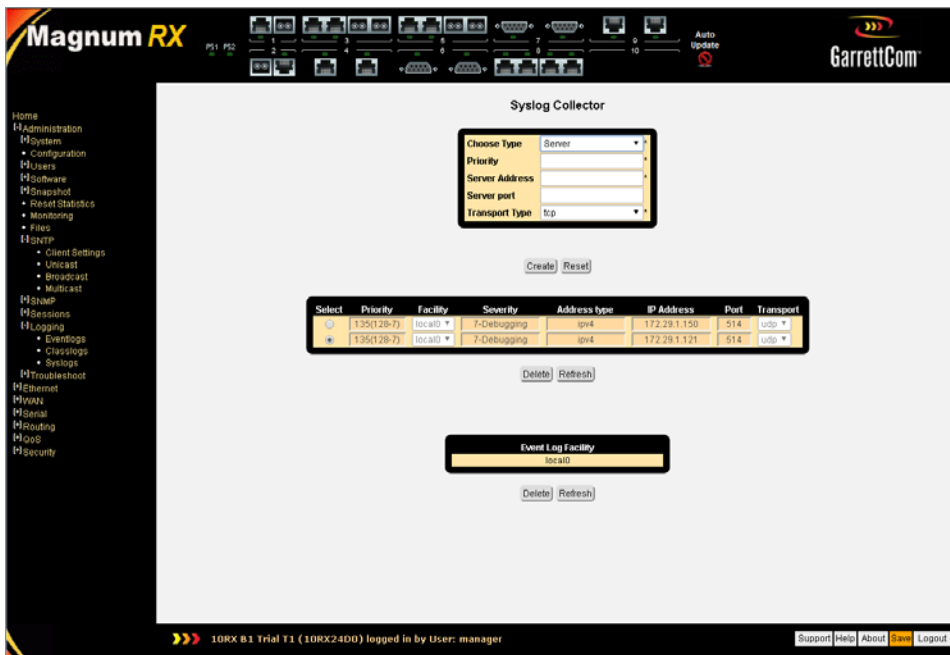
Now you can login using the username: **manager** and password: **manager**



This is the default start screen for the 10RX

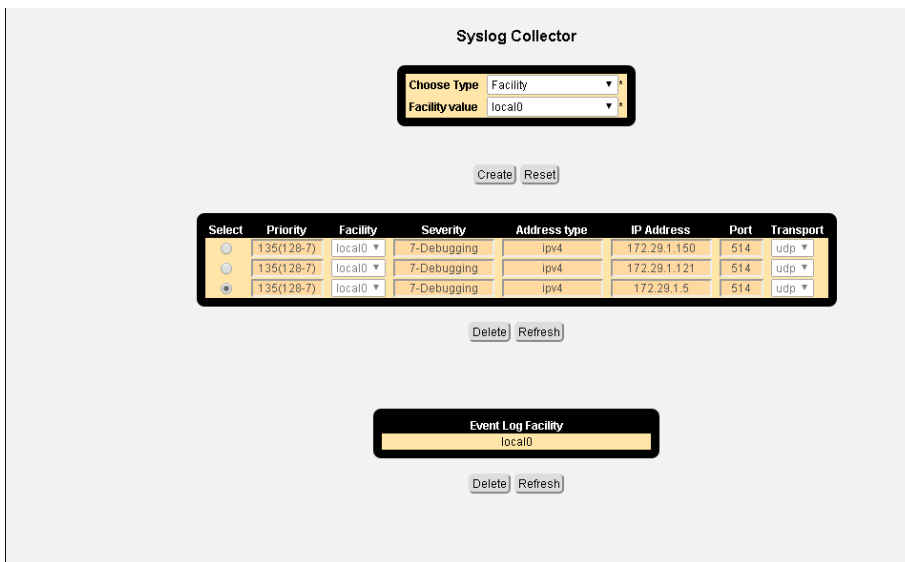
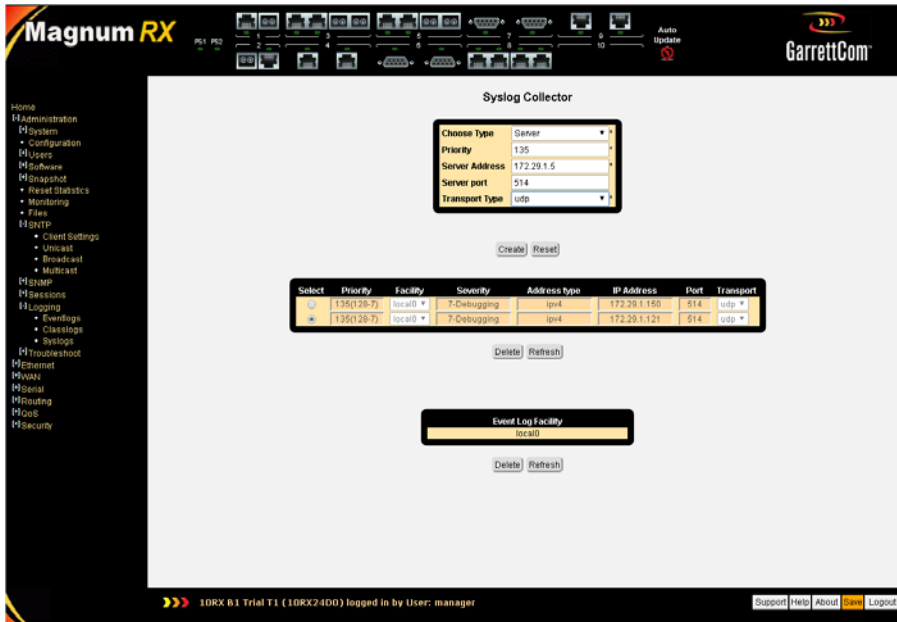
## 4.2 Configuring Syslog

First we must navigate to the Syslog configuration screens this is located in the Administration/Logging subsection.



Next we enter the data collected earlier into the Syslog Collector setting screen:

- The first step is to choose Server as type of collector (see above)



Next we enter the data collected earlier into the Interface setting screen:

- Selecting server sets up the remote logging server (Syslog)
- Priority number is related to the configured facility (local0)
  - See table in section 2.2.4 for Priority definition
  - Priority 135 includes all previous priorities 128 through 134



- Server Address is the IP address of the Syslog server
  - **Example 172.29.1.5**
- Configure Port
  - **Example 514**
- Configure Protocol
  - **Example UDP**

**NOTE:** Make sure that you click on the save button in the lower right hand corner (note color change of save button) of the GUI at this time as the information is not currently saved and should you lose power or reload the system all of the changes will be lost.

You have now completed configuring Syslog of the 10RX using the GUI.

## 5 Configuring Syslog Using the CLI

### 5.1 Logging into the 10RX using either SSH or Console port to access the CLI

Once the connection is made via SSH or Console port you should see the following on the Terminal Server screen:

This system is for the use of authorized users only.

Individuals using this system are subject to having their activities monitored and recorded by authorized company personnel.

Anyone using this system expressly consents to such monitoring and is advised that if such monitoring reveals possible evidence of criminal activity, company personnel may provide the evidence of such monitoring to enforcement officials.

Login: manager

Password:

After Logging into the system you see the system prompt:

```
Magnum 10RX#  
Magnum 10RX#  
Magnum 10RX# show ip inter  
vlan1 is up, line protocol is up  
Internet address is 172.29.1.100/24  
Broadcast address is 172.29.1.255  
Magnum 10RX# show ip route  
Codes: C - connected, S - static, R - RIP, B - BGP, O - OSPF
```

```
E1 - OSPF external type 1, E2 - OSPF external type 2

IA - OSPF inter area

C 172.29.1.0/24 is directly connected, vlan1

Magnum 10RX#

Magnum 10RX# show runn

!

login block-for 1 attempts 3

login password-strength 75

vlan 1

!

interface gigabitethernet 1/1

no shutdown

!

interface gigabitethernet 2/1

!

interface gigabitethernet 3/1

!

interface gigabitethernet 3/2

!

interface gigabitethernet 5/1

!

interface gigabitethernet 5/2

!

interface vlan 1

ip address 172.29.1.100 255.255.255.0

no shutdown
```

!  
interface serial 6/1  
!  
interface serial 6/2  
!  
interface serial 7/1  
!  
interface serial 7/2  
!  
interface serial 7/3  
!  
interface serial 7/4  
!  
interface serial 8/1  
!  
interface serial 8/2  
!  
interface t1e1 4/1  
!  
interface t1e1 4/2  
!  
interface gigabitethernet 1/1  
!  
interface gigabitethernet 2/1  
!  
interface gigabitethernet 3/1

```
!  
interface gigabitethernet 3/2  
  
!  
interface gigabitethernet 5/1  
  
!  
interface gigabitethernet 5/2  
  
!  
interface gigabitethernet 1/1  
  
!  
interface gigabitethernet 2/1  
  
!  
interface gigabitethernet 3/1  
  
!  
interface gigabitethernet 3/2  
  
!  
interface gigabitethernet 5/1  
  
!  
interface gigabitethernet 5/2  
  
!  
interface vlan 1  
  
!  
end  
  
Magnum 10RX#
```

I have also shown 3 commands to allow you to see the current configuration.

- show ip inter (shows the current IP addresses and associated interfaces)
- show ip route (shows the current IP routes and protocols used)
- show runn (shows the current running system configuration)

**NOTE:** the configuration is for the specific 10RX system hardware that I am using your configuration most likely will be different and reflect your hardware.

## 5.2 Configuring Syslog

The CLI configuration process is a layered approach based on what is being configured, it is modeled after the IOS CLI.

```
Magnum 10RX#
Magnum 10RX# conf t
Magnum 10RX(config)# logging server 135 ipv4 172.29.1.5 port 514 udp
Magnum 10RX(config)# exit
Magnum 10RX# write startup-config
Building configuration ...

                                [OK]

Magnum 10RX#
Magnum 10RX# show logging server

Event Log Servers Table Information
-----
Priority   Facility   Severity   Addr-Type   IpAddress   Port   Type
-----
135(128-7) local0  7-Debugging  ipv4      172.29.1.5   514   udp
```

```
Magnum 10RX#Magnum 10RX# write startup-config
```

```
Building configuration ...
```

```
[OK]
```

```
Magnum 10RX#
```

```
Magnum 10RX #
```

- Conf t (configure from the terminal)
- Logging server (CLI command to configure Syslog)
- Priority number is related to the configured facility (local0)
  - See table in section 2.2.4 for Priority definition
  - Priority 135 includes all previous priorities 128 through 134
- Server Address is the IP address of the Syslog server
  - **Example 172.29.1.5**
- Configure Port
  - **Example 514**
- Configure Protocol
  - **Example UDP**

**NOTE:** Make sure that you click on the save button in the lower right hand corner (note color change of save button) of the GUI at this time as the information is not currently saved and should you lose power or reload the system all of the changes will be lost.

### 5.3 Checking the new configuration for all of the changes

```
Magnum 10RX#
```

```
Magnum 10RX# show startup-config
```

```
!
```

```
logging server 135 ipv4 172.29.1.5
```

```
!
```

```
login block-for 1 attempts 3
```

```
login password-strength 75
```

```
vlan 1
!
interface gigabitethernet 1/1
no shutdown
!
interface gigabitethernet 2/1
!
interface gigabitethernet 3/1
!
interface gigabitethernet 3/2
!
interface gigabitethernet 5/1
!
interface gigabitethernet 5/2
!
interface vlan 1
ip address 172.29.1.1 255.255.255.0
no shutdown
!
interface serial 6/1
!
interface serial 6/2
!
interface serial 7/1
!
interface serial 7/2
```



```
!  
interface serial 7/3  
!  
interface serial 7/4  
!  
interface serial 8/1  
!  
interface serial 8/2  
!  
interface t1e1 4/1  
!  
interface t1e1 4/2  
!  
ip route 0.0.0.0 0.0.0.0 172.29.1.100  
!  
interface gigabitethernet 1/1  
!  
interface gigabitethernet 2/1  
!  
interface gigabitethernet 3/1  
!  
interface gigabitethernet 3/2  
!  
interface gigabitethernet 5/1  
!  
interface gigabitethernet 5/2
```

```
!  
interface gigabitethernet 1/1  
!  
interface gigabitethernet 2/1  
!  
interface gigabitethernet 3/1  
!  
interface gigabitethernet 3/2  
!  
interface gigabitethernet 5/1  
!  
interface gigabitethernet 5/2  
!  
interface vlan 1  
!  
set snmp enable  
snmp unicast-poll-interval 180  
snmp unicast-server ipv4 172.29.1.150 primary  
!  
end  
  
Magnum 10RX#
```

You have now configured Syslog via the CLI, saved the new configuration and checked that the changes were made and saved.